

Can fresh, whole tomatoes plump up your profits?



Smokin' Mary's fresh-tomato formula makes her a medal-winning mixer.

But she's also winning food awards for Smokin' Mary-infused chilis, marinades, rubs—we've even medaled as a shrimp cocktail sauce straight from the bottle.

Chefs love our sassy, saucy blend for kicking up seafood, beef, pork and chicken.

As an idea starter, check out the home-kitchen recipes on our website.

And while you're there, ask for a free sample. (See other side.)



Cheers to plump tomatoes for a fat bottom line!



WHO'S YOUR MARY NOW?

Smokin' Mary lights up all kinds of liquor. Mix her with vodka for a classic Smokin' Mary Bloody Mary. Go tequila, and it's Smokin' Mary Bloody Maria. Irish whiskey? Smokin' Mary Bloody Molly. Gin? Smokin' Mary Bloody Ginny. Rum? A Smokin' Mary Bloody Annie. Hola, Mezcal for Smokin' Mary Bloody Graciela. Bourbon brings on Smokin' Mary Bloody Belle. Beer mixes up a Smokin' Mary Michelada. And bring on the bubbly for a Smokin' Mary Bloody Wynne.



"THE BEST BLOODY MARY MIX I'VE EVER HAD..."

So says Donshe Usher, editor for *Food & Beverage Magazine*. Probably because Smokin' Mary Smoked Bloody Mary Mix starts with only fresh, whole tomatoes—never reconstituted juice like the big brands. Why? Because cocktails matter. And better cocktails mean more sales. Want to taste what the Smokin' Mary difference can do for your cocktails and your bottom line?

For a free sample, visit www.SmokinMary.com/FreshTomato



WHO DOESN'T LOVE A REAL, BIG, PLUMP, JUICY TOMATO?

That's what it takes. And lots of 'em.

Smokin' Mary Smoked Bloody Mary Mix is a family-owned company born of a love of tomatoes, an appreciation of hickory smoke, a fondness for the Bloody Mary, and a frustration with commercial Bloody Mary mixes. After intensive recipe testing and tasting, Smokin' Mary was born. This award-winning mixer is made with plenty of zest, zip, and fresh, ripe tomatoes—never reconstituted tomato juice.

But how good is it really? Good enough to take Double Gold and Best Of Show in Sunset Magazine's International Spirit Competition. (Here's the inside scoop: The decision was unanimous.)



And when it comes to awards for food...Mary has those too!

Want a taste? Contact Laurie Nadeau
(She's the girl in the polka-dot dress)
www.smokinmary.com 888-393-9906

SMOKIN' MARY

Smoked Bloody Mary Mix

"Can I tell you a secret?
It was the best Bloody
Mary Mix I've ever had."

— Donshe Usher, Editor
Food & Beverage Magazine



Nutrition Facts

about 6 servings per container

Serving size 4 fl oz (118g)

Amount per serving

Calories **35**

% Daily Value*

Total Fat 0g 0%

Saturated Fat 0g 0%

Trans Fat 0g

Cholesterol 0mg 0%

Sodium 610mg 27%

Total Carbohydrate 8g 3%

Dietary Fiber 1g 4%

Total Sugars 6g

Includes 0g Added Sugars 0%

Protein 1g

Vitamin D 0mcg 0%

Calcium 35mg 2%

Iron 1mg 6%

Potassium 467mg 10%

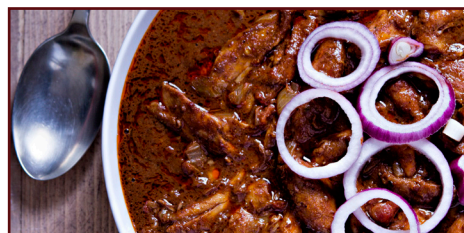
*The % Daily Value tells you how much a nutrient in a serving of food contributes to a daily diet. 2,000 calories a day is used for general nutrition advice.

Gluten Free

INGREDIENTS: WATER, TOMATO PUREE (TOMATOES, TOMATO PASTE, TOMATO JUICE, CITRIC ACID), HORSERADISH (PARSNIPS, DISTILLED VINEGAR, WATER, HORSERADISH, SEA SALT, CANE SUGAR, ARTIFICIAL FLAVORING), LIME JUICE, HOT SAUCE (AGED CAYENE PEPPERS, VINEGAR), CHIPOTLE PEPPERS (CHIPOTLE PEPPERS, WATER, TOMATO PASTE, VINEGAR, SALT, SUGAR, SOYBEAN OIL, STARCH, DRESSING CONCENTRATE AND SPICES), NATURAL SMOKE FLAVOR, LEMON JUICE, SALT, BEEF BASE (BEEF STOCK, MALTODEXTRIN, SALT, YEAST EXTRACT, NATURAL FLAVORS, TAPIOCA STARCH, SALT, VEGETABLE STOCK (CARROT, CELERY, AND ONION STOCK), BEEF FAT, XANTHAN GUM, LEEK JUICE CONCENTRATE, SPICES), CANE SUGAR, WORCESTERSHIRE POWDER (DISTILLED VINEGAR, MOLASSES, CORN SYRUP, SALT, CARAMEL COLOR, GARLIC POWDER, SUGAR, SPICES, TAMARIND, NATURAL FLAVOR, AND SUFITING AGENTS), CELERY SALT (SALT, CELERY), GARLIC POWDER, SPICE, DEHYDRATED ONION.



Smoked Bloody Mary Mix



RETAIL SIZE

NET WEIGHT 25.4 oz

SHELF LIFE 3 years

CASE PACK 12 bottles

CASE WEIGHT 35 lbs

CASE CUBE 0.85

CASES PER LAYER 14

CASES PER PALLET 56

UPC CODE 728943732061

CASE COST \$75 +Shipping

MOQ 4 case

6 or more cases - FREE shipping

PALLET COST \$66/case

FOB DALLAS

FOOD SERVICE

NET WEIGHT 1 gal

SHELF LIFE 1 Year

CASE PACK 4 jugs

CASE WEIGHT 41 lbs

CASE CUBE 1.13

CASES PER LAYER 12

CASES PER PALLET 48

UPC CODE 728943732061

CASE COST \$85 +Shipping

MOQ 4 case

6 or more cases - FREE shipping

PALLET COST \$75/case

FOB DALLAS

For more information contact:



GO TEXAN[®]



CRAFTED LOCALLY IN TEXAS

IS GOING GREEN GOOD FOR YOUR BLOODY MARY?

Rich, savory, tangy, bold, generous body, a peppery thrill and, of course, the mesquite smoke...it's all here in Smokin' Mary's new, award-winning sister mix, Green With Envy. As with legacy red Smokin' Mary, there's no reconstituted juice. Fresh, whole, green tomatoes are combined with cilantro, green onions, serrano peppers and lime juice. These bold ingredients deliver distinct flavor. For the cocktail connoisseur, she raises the bar on taste. For the cunning mixologist, she rivals all challengers.

This green newcomer took a Gold Medal in the *Sunset Magazine* International Spirits Competition.



And when it comes to using Green with Envy in your kitchen, well, she's a winner there too!

Want a taste? Contact Laurie Nadeau
(She's the girl in the polka-dot dress)
www.smokinmary.com 888-393-9906

SMOKIN' MARY

Smoked Green Tomato Mary Mix

GREEN WITH ENVY®



Nutrition Facts

about 6 servings per container

Serving size 4 fl oz (118g)

Amount per serving

Calories **30**

% Daily Value*

Total Fat 0g	0%
Saturated Fat 0g	0%
Trans Fat 0g	
Cholesterol 0mg	0%
Sodium 310mg	13%
Total Carbohydrate 7g	3%
Dietary Fiber 1g	4%
Total Sugars 5g	
Includes 1g Added Sugars	2%
Protein 1g	
Vitamin D 0mcg	0%
Calcium 24mg	2%
Iron 1mg	6%
Potassium 180mg	4%

*The % Daily Value tells you how much a nutrient in a serving of food contributes to a daily diet. 2,000 calories a day is used for general nutrition advice.

Gluten Free

INGREDIENTS: GREEN TOMATOES, WATER, LIME JUICE, CANE SUGAR, GREEN ONION, VEGAN CHICKEN TYPE BROTH CONCENTRATE (NATURAL FLAVOR, SALT, WATER, YEAST EXTRACT, SUGAR, AND VEGETABLE OILS), NATURAL SMOKE FLAVOR, SEA SALT, ONION *, GARLIC*, CHILE*, SPICES, XANTHAN GUM, NATURAL FLAVOR . *DRIED



GREEN WITH ENVY®

Smoked Green Tomato Mary Mix



RETAIL SIZE

NET WEIGHT	25.4 oz
SHELF LIFE	3 years
CASE PACK	12 bottles
CASE WEIGHT	35 lbs
CASE CUBE	0.85
CASES PER LAYER	14
CASES PER PALLET	56
UPC CODE	728943732078
CASE COST	\$75 +Shipping
	MOQ 4 case
	6 or more cases - FREE shipping
PALLET COST	\$66/case
FOB DALLAS	

FOOD SERVICE

NET WEIGHT	1 gal
SHELF LIFE	1 Year
CASE PACK	4 jugs
CASE WEIGHT	41 lbs
CASE CUBE	1.13
CASES PER LAYER	12
CASES PER PALLET	48
UPC CODE	728943732078
CASE COST	\$85 +Shipping
	MOQ 4 case
	6 or more cases - FREE shipping
PALLET COST	\$75/case
FOB DALLAS	

For more information contact:



CRAFTED LOCALLY IN
TEXAS



SMOKIN' MARY GETS FRESH, MEXICAN STYLE.

Bold and racy Li'l Tart is Smokin' Mary's play on a legendary cocktail from Guadalajara. Li'l Tart is sweet, spicy, tangy, and full of flavor with a nice bite. Her complex blend of different orange, grapefruit and lime juices, tomatoes and chipotle peppers all come together for a feisty and refreshing pick-me-up. The customary liquor to mix with Li'l Tart is a 100% agave tequila blanco. She's been blended specifically to complement the citrusy and peppery profiles of the fabled agave. If you prefer an agave reposado, that's OK too. Either way, with all those fruit juices and zesty flavors, Smokin' Mary Li'l Tart is calculated to do a delightful little dance on your tongue. The adventurous mixologist will probably want to try Li'l Tart with gin, vodka or other liquors and liqueurs. She's a zippy addition to cocktail hour or brunch.

And if you want to see how Li'l Tart brings flavor to your kitchen, she's zippy there too!

Want a taste? Contact Laurie Nadeau
(She's the girl in the polka-dot dress)
www.smokinmary.com 888-393-9906



Smoked, Sweet Bloody Mary Mix

LI'L TART™



Nutrition Facts

about 6 servings per container

Serving size 1/2 cup (118g)

Amount per serving

Calories **70**

% Daily Value*

Total Fat 0g **0%**

Saturated Fat 0g **0%**

Trans Fat 0g

Cholesterol 0mg **0%**

Sodium 470mg **20%**

Total Carbohydrate 17g **6%**

Dietary Fiber 0g **0%**

Total Sugars 12g

Includes 9g Added Sugars **18%**

Protein 1g

Vitamin D 0mcg **0%**

Calcium 13mg **2%**

Iron 0mg **0%**

Potassium 90mg **2%**

*The % Daily Value tells you how much a nutrient in a serving of food contributes to a daily diet. 2,000 calories a day is used for general nutrition advice.

Gluten Free

INGREDIENTS: JUICE BLEND FROM CONCENTRATE (WATER, ORANGE JUICE CONCENTRATE, GRAPEFRUIT JUICE CONCENTRATE, LIME JUICE CONCENTRATE), TOMATO PUREE (WATER, TOMATOES), CANE SUGAR, CHIPOTLE PEPPERS IN ADOBO (CHIPOTLE PEPPERS, WATER, TOMATO PASTE, VINEGAR, SALT, SUGAR, SOYBEAN OIL, STARCH, DRESSING CONCENTRATE, AND SPICES), SEA SALT, NATURAL SMOKE FLAVOR.



L'L TART™

Smoked, Sweet Bloody Mary Mix



RETAIL SIZE

NET WEIGHT	25.4 oz
SHELF LIFE	3 years
CASE PACK	12 bottles
CASE WEIGHT	35 lbs
CASE CUBE	0.85
CASES PER LAYER	14
CASES PER PALLET	56
UPC CODE	728943732085
CASE COST	\$75 +Shipping
	MOQ 4 case
	6 or more cases - FREE shipping
PALLET COST	\$66/case
FOB DALLAS	

FOOD SERVICE

NET WEIGHT	1 gal
SHELF LIFE	1 Year
CASE PACK	4 jugs
CASE WEIGHT	41 lbs
CASE CUBE	1.13
CASES PER LAYER	12
CASES PER PALLET	48
UPC CODE	728943732085
CASE COST	\$85 +Shipping
	MOQ 4 case
	6 or more cases - FREE shipping
PALLET COST	\$75/case
FOB DALLAS	

For more information contact:



CRAFTED LOCALLY IN
TEXAS